



### RESPONSIBILITIES OF THE VISITING MEDICAL OFFICER IN AN EMERGENCY

#### In the event of a Fire

The Visiting Medical Officer is to follow the instructions of the Fire Officer, Director Hospital/Nursing or Registered Nurse in-charge, in the event of fire.

The Visiting Medical Officer may be asked to assist with the removal of patients from the immediate area of a fire.

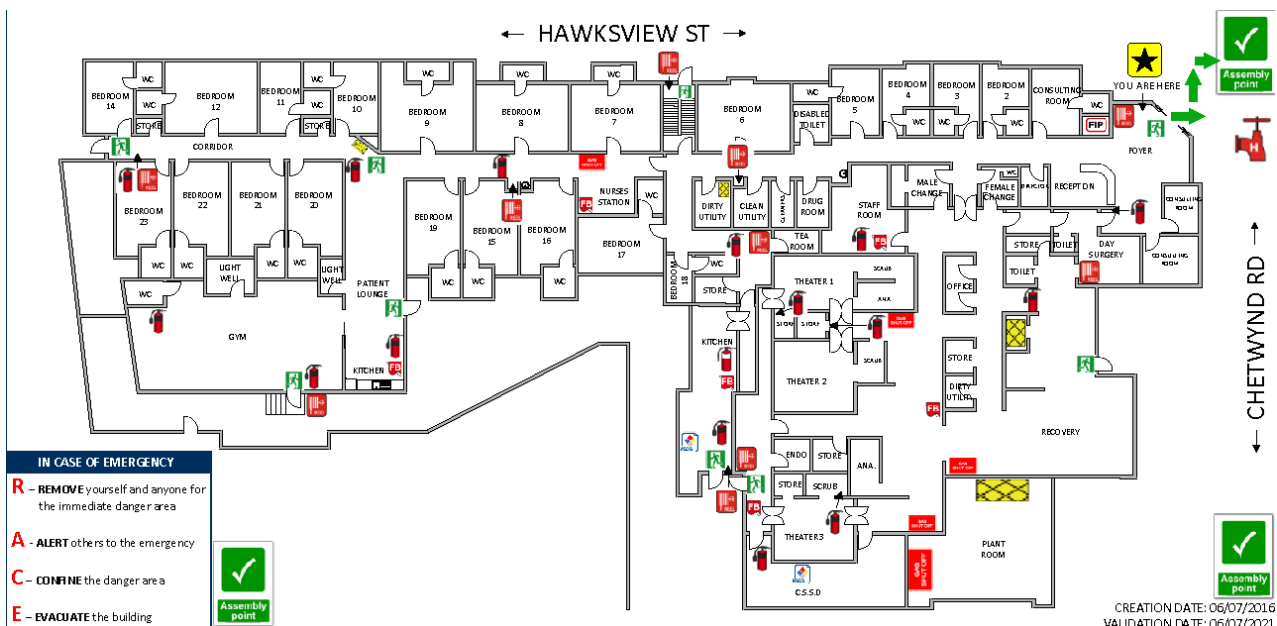
Where the Visiting Medical Officer is operating/anaesthetising on a patient in the Operating Theatre and the fire is in the immediate area, a decision needs to be made by the Surgeon and the Anaesthetist as to whether it is safe to continue. If not, the patient should be covered with a sterile drape and evacuated to a safe area.

The Visiting Medical Officer may be asked to render urgent medical care if a person should require attention.

#### Emergency Assembly Areas

There is 1 emergency assembly area. This is the front lawn of the hospital near the Doctor's car park. An alternative is the car park to the back of the hospital.

NB: In the event of toxic leak, wind direction should be taken into account when selecting evacuation areas.



#### In the event of a Medical Emergency

In the event of a medical emergency such as cardiac arrest, nursing staff may ask the Visiting Medical Officer to attend when possible.

#### Other Emergency Procedures

The threat of FIRE, EXPLOSION and DISASTER is always present. There is no time for planning once a disaster strikes. Therefore, this hospital has a pre-arranged plan for dealing with each disaster.

Within reach of all staff phones is the **Emergency Procedures Flipchart**. The flipchart provides information on the procedures to follow for the following emergencies:

- Holdup or personal threat

- Internal emergency
- External emergency
- Medical emergency
- Fire
- Evacuation
- Bomb threat

Your assistance with these matters is appreciated.

P:\1-Holroyd\HOSPITAL SECRETARY\MASTER DOCUMENTS\VMO Documents\Responsibilities of the Visting Medical officer in an Emergency.docx

**THIS DOCUMENT IS CONTROLLED**